



Scan Me
for website



GREENE
AGRICULTURAL PRODUCTS

CATALOGUE

Your Trusted Partner in Agriculture

www.greeneproducts.biz



**BVB
SUBSTRATE (WHITE)**



**PINDSTRUP
SUBSTRATE (YELLOW)**



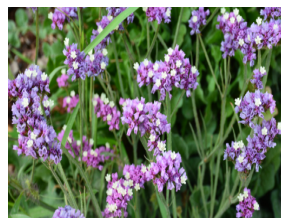
**PINDSTRUP
SUBSTRATE (RED)**



**COCO PEAT &
VERMICULITE**



FLOWER BUCKETS



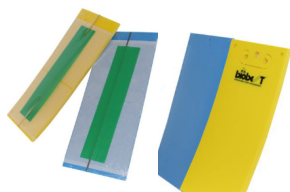
FLOWERS



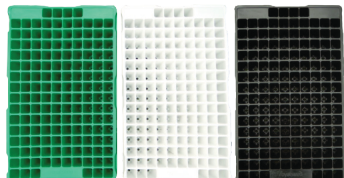
**FRUIT FLY &
MELON FLY LURES**



ROLLER & DELTA TRAPS



**MONI TRAPS &
ENTRAPPS**



SEEDLING TRAYS



VERTICAL BAG GARDENS



SEEDLING CRATES

BVB SUBSTRATE

HORTICULTURAL SUBSTRATE

Horticultural Substrate is a **professional-grade medium** from Kekkilä-BVB, made from **high-quality peat** to provide **optimal aeration**, **moisture retention**, and **nutrient** availability for **healthy root development** across a wide range of crops.

USES:

- Greenhouse cultivation of vegetables, ornamentals, and herbs
- Container growing and potting mixes
- Propagation, transplanting, and general horticultural use

CHARACTERISTICS:

- High fertilizer content (Starter 15-12-29)
- Enriched with limestone
- pH: 5.5 | EC: 0.6 (1½* Method)
- Fine blonde peat

AVAILABLE SIZES:

- 280L
- 150L (Kadogo)



PINDSTRUP SUBSTRATE(YELLOW)

FINE GRADE SUBSTRATE

A premium fine peat substrate with **excellent water retention** and **uniform root-zone moisture**. Its **consistent texture** ensures **even germination** and **healthy roots**, with minimal fertilizer for **precise nutrient control**.

USES:

- Ideal for ornamental and vegetable seed germination
- Perfect for plug production and paper pot systems
- Recommended for young plant propagation and delicate seedlings

CHARACTERISTICS:

- Low fat content
- pH ~6.0 | Organic matter ~90%
- EC ~3.0 (1½ method) | Moisture 50–60%
- Blond peat | Bulk density 190–220 g/L



PINDSTRUP SUBSTRATE(RED)

MEDIUM GRADE SUBSTRATE

A premium sphagnum peat substrate with medium particle size for excellent aeration and balanced moisture retention. Enriched with moderate fertilizer to support healthy early growth, its stable structure ensures consistent root development.

USES:

- Ideal for vegetable seedling production in trays or pots
- Suitable for transplanting into larger containers
- Perfect for crops needing good aeration and moderate early nutrition

CHARACTERISTICS:

- Medium fat content
- pH ~5.5 | EC ~44 (1½ method)
- Moisture max ~90%
- 100% blond peat
- Bulk density 180–200 g/L



VERMICULITE

VERMICULITE

A **naturally expanding** mineral with **excellent water retention**, vermiculite is **ideal** for **seed-starting mixes** and **soil amendments**. Its **lightweight, porous structure** improves **soil aeration** and **moisture** management, creating an **optimal** environment for **seed germination** and early **plant growth**. **Versatile** and **effective**, it enhances soil conditions and supports healthy, vigorous plants.

BENEFITS:

- Lightens and loosens soil for better root growth
- Improves natural aeration, promoting faster root development
- Helps hold roots together in trays



USES:

- Mixed with other growing media like peat moss or coco peat during propagation
- Used as an anti-caking agent in fertilizers

COCO PEAT

COCO PEAT PLUS+

A **premium-grade** growing medium and substrate for **hydroponic systems**, made from **coconut coir** and reconditioned to the ideal formula for optimal cultivation with Grade 1 quality (pH 5.5–6.5, EC <0.5 mS) for optimal plant growth and cultivation.

BENEFITS:

- Free from fungi, bacteria, and pests, making it safer than soil
- Maintains healthy roots, retains water, and aids nutrient uptake
- Promotes strong, vigorous plant growth up being strong.



USES:

- Suitable for all types of cultivation
- Plotted plants
- Soccer or golf course turf
- Greenhouses

SEEDLING TRAYS

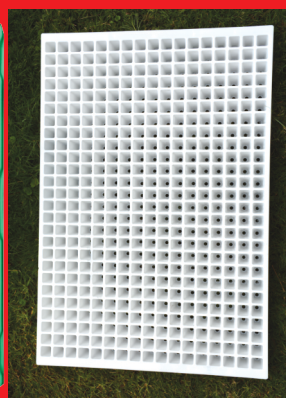
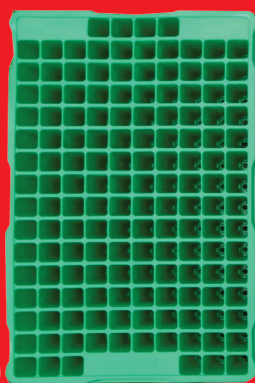
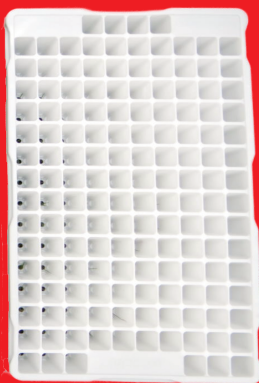
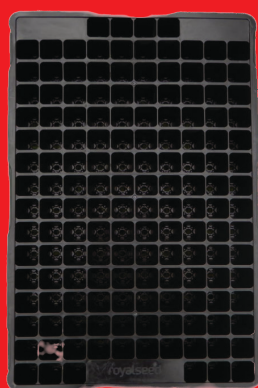
Propagation trays are specially designed **PVC uv stabilized trays** that hold seedlings from **germination stage** until they are ready for **transplantation**. They provide extra depth for increased soil volume designed to **de-nest easily**, save your time and effort while planting.

AVAILABLE IN SIZES:

- 150 / 442 Cells

150 Cell Seedling

422 Cell Seedling



WHY CHOOSE SEEDLING TRAYS?

- Made from strong, durable plastic that lasts through many planting cycles.
- Reusable for multiple seasons, helping farmers cut down on costs.
- Fully recyclable, making it safe for the environment.
- Simplifies sowing, handling, and transplanting.
- Maximizes space use and seed accountability.
- Protects roots during transplanting, boosting survival and growth.
- Ensures neat arrangement and uniform seedlings.

SEEDLING CRATES

Our **innovative seedling crates** offer a **superior solution** for the **efficient transportation** of trays, ensuring your seedlings reach their destination in optimal condition. Unlike conventional trays, our crates provide an added **layer of protection**, **minimizing the risk of damage** during transit. With their sturdy design and **enhanced stability**, our seedling crates are the ideal choice to **safeguard** the integrity of your **valuable plants** throughout the **transportation process**.



WHY CHOOSE OUR SEEDLING CRATES?

- Designed for durability and functionality
- Crafted to withstand various transport conditions
- Suitable for bumpy roads and stacked storage
- Ergonomic design for easy handling and stacking
- Streamlines logistics of seedling distribution
- Recyclable and reusable
- Aligns with commitment to sustainable practices
- Trustworthy protection for plants
- Contributes to a greener, more eco-conscious industry

FLOWER BUCKETS

Our **Premium Line of Planters** is crafted from **high-grade plastic**, delivering unmatched quality and **durability**. Designed for **strength** and **long-lasting** use, they are the ideal choice for enhancing **gardens** and **greenhouses**. Additionally, the buckets serve as reliable storage solutions in flower farms.



CHARACTERISTICS:

- **Material:** Crafted from high-quality plastic, our planters guarantee robustness and sturdiness, providing long-lasting support for your plants.

SPECIFICATIONS:

- **Packing:** A set of 20 PCS ensures you have an ample supply for your gardening needs.
- **Dimensions:** Each planter boasts dimensions of **Height 355mm x Diameter 330 mm**, providing an ideal size for a variety of plants.
- **Capacity:** With a generous capacity of **20 Litres**, these planters offer ample space for your plants to thrive.
- **Available Colours:**
 1. White
 2. Cream
 3. Black
 4. Yellow
 5. Green
 6. Light Green

FLOWERS

STATICE MIX

Airy clusters of papery blooms in **lavender, white, rose, and yellow**. Perfect for fresh or dried arrangements, with long-lasting color that makes it a garden favourite.

DESCRIPTION:

- Hortus Statice Mix – Annual
- Height: 60–75 cm
- Mixed-color papery blooms
- Spacing: 35 × 30 cm | Seeding: 1.5 g/m²

BENEFITS & USES:

- **Floral:** Perfect for bouquets and dried arrangements
- **Garden:** Drought-tolerant, low maintenance, and attracts pollinators

NASTURZIO NANO MIX

A compact, vibrant dwarf variety with **red, yellow, and orange blooms**. Perfect for borders, containers, and hanging baskets. Low-maintenance, ornamental, and **edible—enhancing** both gardens and meals.

DESCRIPTION:

- Hortus Nasturtium Nano Mix – Annual
- Height: 25–30 cm
- Warm-toned single flowers
- Spacing: 30 × 25 cm | Seeding rate: 2 g/m²

BENEFITS & USES:

- **Edible flowers & leaves**
- **Medicinal:** natural antiseptic, supports respiratory & urinary health
- **Nutritional:** rich in Vitamin C & antioxidants
- **Culinary:** adds color & peppery flavor to salads
- **Garden:** attracts pollinators, deters pests
- **Practical:** highly ornamental & low maintenance



NASTURZIO MIX PISELLO ODOROSO (SWEET PEA)

A **unique blend** of nasturtium and sweet pea traits, featuring **colorful blooms**, **climbing growth**, and a **mild fragrance**. Perfect for trellises, fences, and other vertical spaces.

DESCRIPTION:

- Hortus Nasturtium & Sweet Pea Mix– Annual
- 40–60 cm tall, Colorful, mildly fragrant blooms
- Spacing: 40 × 30 cm | Seeding rate: 2 g/m²

BENEFITS & USES:

- **Not edible** – seeds & pods toxic
- **Ornamental:** vertical gardening, climbing, fragrance
- **Scientific:** source of BAPN for medical research
- **Research:** applied in genetic linkage studies



CALENDULA GIF DOPPIO (POT MARIGOLD - DOUBLE BLOOM)

A vibrant variety with large golden-orange double blooms. Celebrated for its skin-soothing, healing properties and ornamental charm—uniting beauty with function.

DESCRIPTION:

- Calendula Double (GIF Doppio)– Annual
- 30–50 cm tall
- Golden-yellow & orange blooms
- Spacing 30 × 25 cm | Seeding 2 g/m²

BENEFITS & USES:

- **Medicinal:** Wound healing, anti-inflammatory & antioxidant
- **Preparations:** Teas, ointments, tinctures
- **Garden:** Perfect for ornamental & medicinal use



ASTRO CALIFONIA MIX (ASTER)

A striking mix of large **daisy-like blooms** in bold **pink, purple, and white**. Tall, **vibrant**, and perfect for adding structure and color to gardens or floral arrangements.

DESCRIPTION:

- Hortus Aster California Mix— Annual
- 60–80 cm tall, Large double flowers in mixed colors
- Spacing: 40 × 35 cm | Seeding: 1.5 g/m²

BENEFITS & USES:

- **Garden Benefits:** Attracts pollinators
- **Ornamental Use:** Perfect for borders & cut flowers



GAROFANO CHINESE NANO DOPPIO MIX (CHINESE PINK)

A compact, fragrant carnation mix with vivid **scarlet, fuchsia, and white double blooms**. Its clove-like scent and vibrant petals make it perfect for edging, containers, and scented gardens.

DESCRIPTION:

- Hortus Chinese Carnation (Dwarf Double Mix) – Annual
- 20–25 cm tall, Double blooms in vibrant colors
- Spacing: 25 × 20 cm | Seeding: 1.5 g/m²



BENEFITS & USES:

- **Medicinal:** Supports digestion, urinary health & constipation relief
- **Garden:** Attracts pollinators, repels deer & rabbits
- **Health:** Anti-inflammatory for skin irritations
- **Ornamental:** Ideal for window boxes, edges & perfume gardens

NASTURZIO DOPPIO MIX

A vibrant mix of double-flowered nasturtiums in **fiery reds, oranges, and yellows**. With trailing growth and lush foliage, it's perfect for ground cover or hanging planters—**beautiful, edible, and medicinal**.

DESCRIPTION:

- Hortus Nasturtium Doppio Mix – Annual
- 30–40 cm tall, Large double flowers, warm mixed colors
- Spacing: 35 × 30 cm | Seeding: 2 g/m²



BENEFITS & USES:

- **Edible:** Peppery flowers & leaves
- **Culinary:** Great for salads, garnishes & pickled caper substitute
- **Medicinal:** Antibacterial, antifungal, supports digestion & respiratory health, aids wound healing
- **Nutritional:** Rich in vitamins C, B1–B3 & minerals (Mn, Fe, Ca)

FIORDALISO MIX (CORNFLOWER)

A pastel blend of **blue, pink, and white daisy-like blooms**. Valued for both **ornamental beauty** and edible use.

DESCRIPTION:

- Hortus Cornflower Mix – Annual
- 50–60 cm tall, Soft-hued meadow flowers
- Spacing: 30 × 25 cm | Seeding: 1.5 g/m²

BENEFITS & USES:

- **Edible:** Great in salads & teas
- **Culinary:** Used in herbal blends & fruit teas
- **Ornamental:** Perfect for fresh & dried arrangements



TRAPS & PHEROMONES

DELTA TRAPS

Delta traps use **sex pheromones** to **lure** and **trap male moths** on sticky pads, preventing reproduction and reducing pest populations.



Sticky pad

ROLLER TRAPS

Roller traps (Blue: 15×100 m, Yellow: 15×125 m) are effective against flying pests like whiteflies, fruit flies, bean flies, thrips, leaf miners, moths, and winged aphids.



MONI TRAPS

Monitraps are small yellow and blue sticky traps (25 cm × 10 cm) with dry glue, used in fields and greenhouses to catch flying pests for identification and counting, helping monitor pest pressure trends; recommended use is one trap per greenhouse bay.



TRAPS & PHEROMONES

ENTRAPS

Available in yellow and blue (25×10 cm) with wet glue on both sides, these traps are ideal for **mass trapping of whiteflies, thrips, fruit flies, moths, bean flies, and aphids**. Each pack contains 20 cards; recommended use is 1 trap per 10 m² (1,000 traps/ha). Peel and place as needed flies, and aphids.



FRUITY FLY & MELON FLY LURES

Fruit fly and melon fly traps feature **customized tops** that fit any plastic bottle. Each trap uses a **pheromone-dosed wick** to attract pests inside, preventing reproduction and reducing their population.



AUTO DISSEMINATION DEVICE (ADD)

Used to **attract** and **infect fruit and melon flies**, enabling **cross-infection** within the field population and spreading further during mating.



VERTICAL BAG GARDENS

Vertical bag farming **boosts leafy vegetable yields** up to six times more than traditional methods, making it **ideal** for **urban** and **rural farmers**, as well as families maximizing garden space.



WHY CHOOSE VERTICAL BAG GARDENS?

- **Durable:** Reusable for up to 10 years.
- **Nutritious Greens:** Ideal for amaranth, Sukuma wiki, spinach, nightshade, and herbs.
- **Space & Water Saving:** Up to 10× more efficient than ground planting.
- **High Yield:** Grow root crops like beetroot or onions on top for extra harvest.

AVAILABLE IN SIZES:

- **Large Bag:** Accommodates up to 100 plants.



HOW TO PREPARE A SEEDLING TRAY FOR PLANTING

STEP 1: START OFF WITH PREPARING A MIXTURE OF PEATMOSS & VERMICULITE



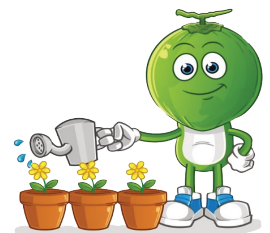
STEP 2. ADD THE READY MIXTURE OF PEATMOSS & VERMICULITE TO YOUR DURABLE TRAY



STEP 3. ENSURE YOU FILL ALL THE 150 HOLES WITH THE MIXTURE OF PEATMOSS & VERMICULITE



STEP 4. ONCE THE 150 HOLES ARE COMPLETELY FILLED, BALANCE THE MIXTURE ON THE TRAY TO BE EVENLY DISTRIBUTED. NOW YOU ARE READY TO START PLANTING IN YOUR SEEDS...



HOW TO PLANT SEEDS ON THE SEEDLING TRAY



STEPS TO TAKE

1- 3. Fill Tray: Fill each seedling tray cell with the mixture, ensuring no air pockets.

4. Create Holes: Make precise holes at the center of each cell, adjusting depths to 0.5 cm for small seeds and 1 cm for larger seeds.

5. Place Seeds: Carefully put a seed in each hole, maintaining uniform depth.

6. Ensure Consistence: Confirm all cells are filled and holes are of the same depth.

7. Cover and Water: Cover with a thin layer of medium(peat moss & vermiculite) mixture, water evenly, and avoid water-logging

8. Uniform Germination: use either a germination chamber or cover with a black polythene bag for 5 to 7 days until seeds start to emerge.



Become a Greene Farmer

ROYAL SEED COMPLEX

Trans-view Avenue, Off Nairobi Namaga
Road

0202 690 693 | 0780 884 071

0733 687 607

info@khs.co.ke

www.greeneproducts.biz

Follow Us on Socials:



@greeneagriculturalproducts

