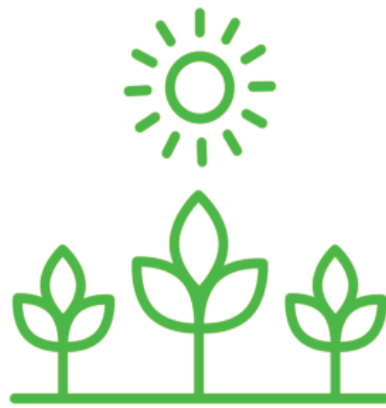




Scan for website



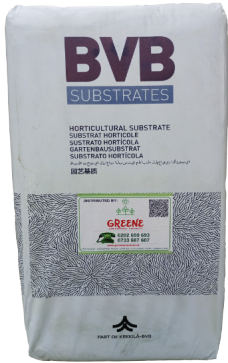
GREENE
AGRICULTURAL PRODUCTS

GREENE AGRICULTURAL PRODUCTS
CATALOGUE

Your Trusted Partner in Agriculture
www.greeneproducts.biz



OUR PRODUCTS



BVB SUBSTRATE



**PINDSTRUP
SUBSTRATE (YELLOW)**



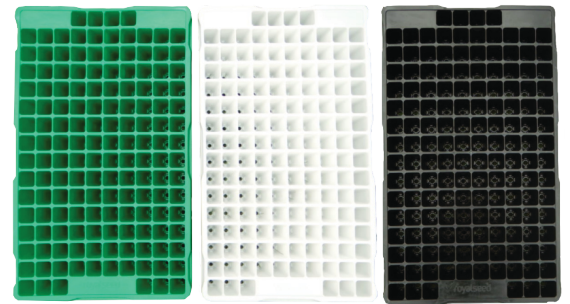
**PINDSTRUP
SUBSTRATE RED**



**COCO PEAT &
VERMICULITE**



FLOWER BUCKETS



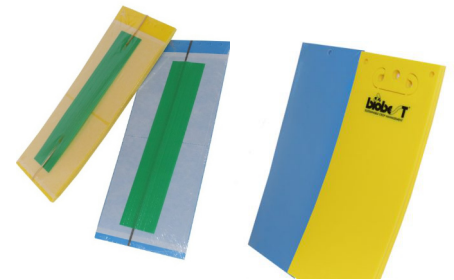
SEEDLING TRAYS



SEEDLING CRATES



**DELTA TRAPS &
ROLLER TRAPS**



**MONITRAPS &
ENTRAPPS**



**FRUIT FLY &
MELON FLY LURES**



**AUTO DISSEMINATION
DEVICE (ADD)**



VERTICAL GARDEN



BVB SUBSTRATE



BVB Substrates is one of the **Expert Brands** of substrate of producer and supplier **Kekkilä-BVB**. With over 100 years of experience, this brand that originated in the **Netherlands** has become the **European Market Leader** for professional growers, and is known as a reliable supplier of high quality products. We offer **tailor-made substrates** and support that perfectly fit the specific needs of any grower.

CHARACTERISTICS:

GRADE 1

- High fertilizer content
- Starter fertilizer 15-12-29
- Limestone
- PH – 5.5
- EC – 0.6 (1 1/2 * Method)
- Type – Fine blonde

USES

- Vegetable seedling
- Herbs & Ornamental Seedling
- Cutting & Plugs





PINDSTRUP SUBSTRATE(YELLOW)

Peat moss, a natural organic material derived from **decomposed sphagnum moss**, is a valuable soil amendment known for its ability to improve moisture retention, **enhance nutrient uptake**, and **promote healthy root development** in plants.

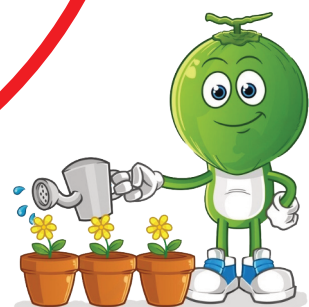
CHARACTERISTICS:

GRADE 1

- Low Fat content
- Ph: – 6.0 app.
- Organic matter: App 90% dry matter
- EC:- App 3.0 (11/2 method)
- Moisture: 50 - 60 %
- Type: Blond Peat
- Volume: 190 -220 g/l

USES

- Cutting
- Ornametal Seeding
- Paper plugs





PINDSTRUP SUBSTRATE(RED)

Peat moss, a natural organic material derived from **decomposed sphagnum moss**, is a valuable soil amendment known for its ability to improve moisture retention, **enhance nutrient uptake**, and **promote healthy root development** in plants.

CHARACTERISTICS:

GRADE 1

- Medium fat Content
- Ph - App 5.5
- EC – App44 (11/2* method)
- Moisture - Max App 90%
- Type- 100% Bond peat
- Volume weight - 180-200 g/l

USES

- Vegetable seedling
- Fruit trees
- Forest trees





VERMICULITE

Vermiculite, a **naturally expanding** mineral with **remarkable water retention**, is a valuable addition to farming practices. Its **lightweight** and **porous nature** make it ideal for **seed starting mixes** and **soil amendments**, improving **soil structure** and **Particularly beneficial for seed germination and early plant growth**, vermiculite creates an **optimal environment**, ensuring successful development and providing essential moisture for seedlings. Its versatility makes it a **natural solution** for enhancing soil conditions and promoting overall plant health in horticulture.

GRADE 1

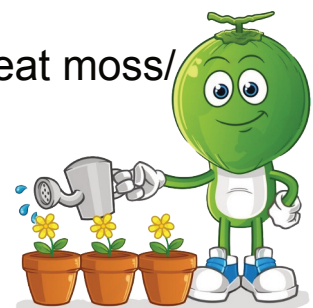


BENEFITS

- It helps to make the soil lighter and less compact
- It also makes the soil aerated Naturally and the roots are able to develop at a much faster rate.
- Assist in holding together roots in the tray

USES

- Used in conjunction with other growing media like peat moss/ coco peat during propagation.
- It's also used as an anti-caking agent in fertilizer.





COCO PEAT

Coco Peat Plus+ Premium Grade growing medium and substrate for **hydroponic systems** which is produced from coconut coir. Also they are reconditioned for the right formula for cultivation procedures.

BENEFITS

- Coco Peat Plus+ is better than soil due to free of plant fungi, free of bacteria and free of eggs and embryonate of pest.
- Coco Peat Plus+ maintain root of plant in good condition. They have special option are clear, absorb water and help the uptake of plant nutrients.
- Coco PeatPlus+ will make your plant grow up being strong.



CHARACTERISTICS:

GRADE 1

- PH: 5.5 6.5
- EC < 0.5 MS

USES

Its used for all types of cultivation

- Plotted plants
- Soccer/ golf Course grass (turf)
- Green houses



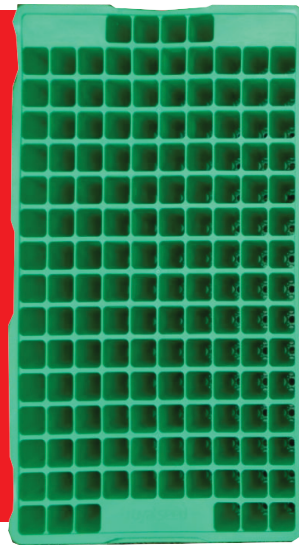
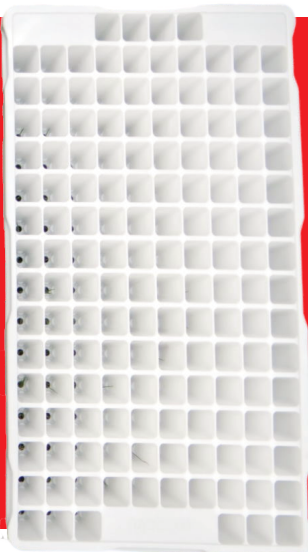
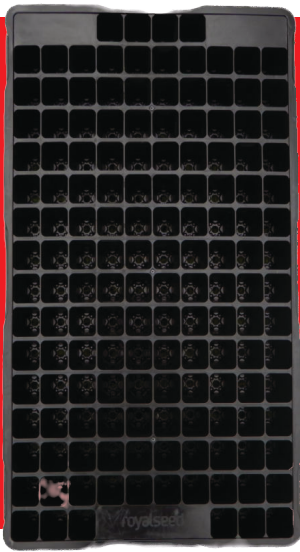


SEEDLING TRAYS

Propagation trays are specially designed **PVC uv stabilized trays** that hold seedlings from **germination stage** until they are ready for **transplantation**. They provide extra depth for increased soil volume designed to **de-nest easily**, **save** your time and effort while planting.

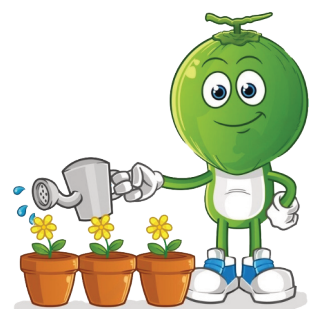
WHY CHOOSE SEEDLING TRAYS.

1. They make **Sowing, Handling** and **Transplanting** of seeds easy.
2. Allows count of actual **germinating** seeds and seedlings **survival**
3. Efficient use of space allowing one to **account** for **each** and **every seed** placed.
4. During transplanting the growth media covers the root system preventing **transplant shock** which would otherwise slow down crop growth and delay **maturity**.
5. Ensure tidy arrangement and **consistent growth** of plant seedlings
6. Does **not damage roots** during transplanting and increases **survival rate**.



WHY CHOOSE OUR SEEDLING TRAYS?

- Made from strong plastic material for durability
- Reusable
- Very affordable
- Recyclable
- Adequate spacing





SEEDLING CRATES

Our **innovative seedling crates** offer a **superior solution** for the **efficient transportation** of trays, ensuring your seedlings reach their destination in optimal condition. Unlike conventional trays, our crates provide an added **layer of protection**, minimizing the **risk of damage** during transit. With their sturdy design and **enhanced stability**, our seedling crates are the ideal **choice** to **safeguard** the integrity of your **valuable plants** throughout the **transportation process**.



WHY CHOOSE OUR SEEDLING CRATES?

- Designed for durability and functionality
- Crafted to withstand various transport conditions
- Suitable for bumpy roads and stacked storage
- Ergonomic design for easy handling and stacking
- Streamlines logistics of seedling distribution
- Recyclable and reusable
- Aligns with commitment to sustainable practices
- Trustworthy protection for plants
- Contributes to a greener, more eco-conscious industry





FLOWER BUCKETS



Introducing our Premium Line of Planters, meticulously crafted from **top-tier plastic**, ensuring **unparalleled quality** that stands head and shoulders above other products in the **market**. These planters are designed to be the **epitome** of **durability** and **strength**, making them the perfect choice for enhancing the beauty of your garden or greenhouse. The buckets are **utilized for storage** in flower farms.

CHARACTERISTICS:

Material: Crafted from high-quality plastic, our planters guarantee robustness and sturdiness, providing long-lasting support for your plants.

SPECIFICATIONS:

Packing: A set of 20 PCS ensures you have an ample supply for your gardening needs.

Dimensions: Each planter boasts dimensions of **Height 355mm x Diameter 330 mm**, providing an ideal size for a variety of plants.

Capacity: With a generous capacity of **20 Ltrs**, these planters offer ample space for your plants to thrive.

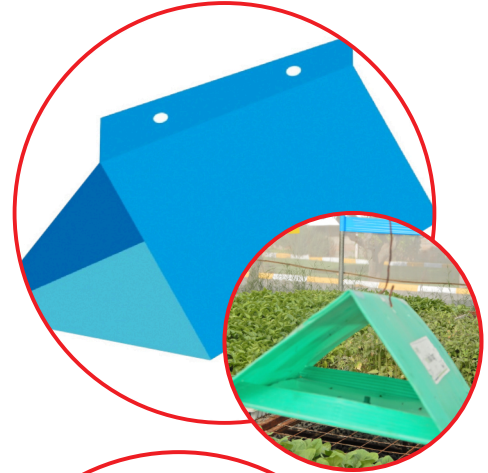
Available Colours: White, Cream, Black, Yellow, Green & Light Green



TRAPS & PHEROMONES

DELTA TRAPS

Delta traps are fitted with a **sex pheromone attractant** that attracts **adult male moths**. The male moths lured are trapped in the **sticky pad** inside the **delta trap**. This stops the **reproduction** of the **pests**.



ROLLER TRAPS

Roller traps are available in two colours; **Blue** and **Yellow**.

The Blue traps are 15cm x 100m

The Yellow traps are 15cm x 125m

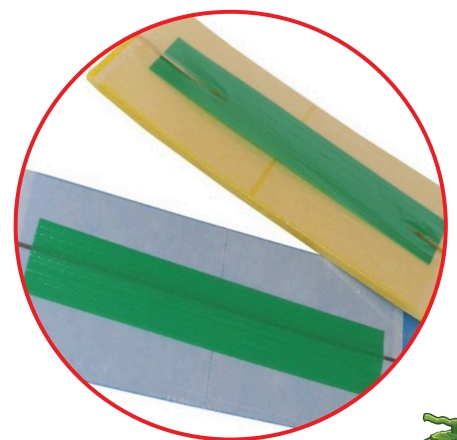
They are used for gas trapping flying pest such as whiteflies, fruit fly, bean fly, thrips, leaf miners, moths and winged aphids.

PACK SIZE 1



MONI TRAPS

Monitraps are available in **yellow** and **blue sticky traps** measuring **25cm x 10cm**. These traps come with dry glue and are specifically designed for monitoring purpose. They are used for capturing flying pest, enabling identification helps counting of their numbers. This information helps in comprehensive **pest pressure trends**. The blue and yellow sticky traps are **effective** in **trapping** various pests including whiteflies fruit flies, thrips, bean flies, leaf miners and moths. Each **pack** contains **20 traps**, and for **monitoring**, it is recommended to use on **trap** per bay.

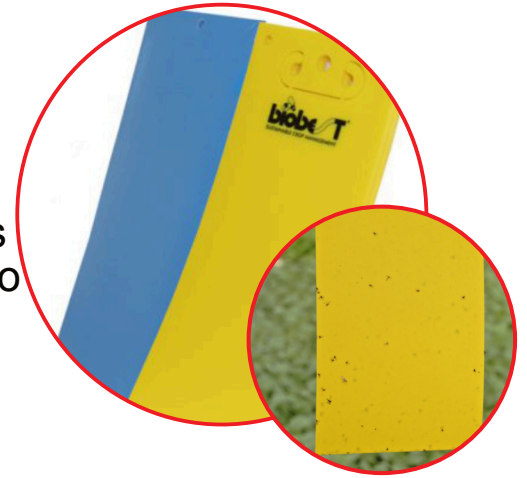




TRAPS & PHEROMONES

ENTRAPS

The **traps** are available in **yellow** and **blue** measuring **25cm x 10cm**, which are equipped with wet glue, making them ideal for **mass trapping**. Each pack contains 20 cards, and the traps have **glue** applied on both sides. Simply peel of the traps as needed. For mass trapping, it is recommended to use one trap per 10 square meters (1000 traps per hectare). These traps effectively capture pests including whiteflies, thrips, fruit flies, moths, bean flies, and aphids.



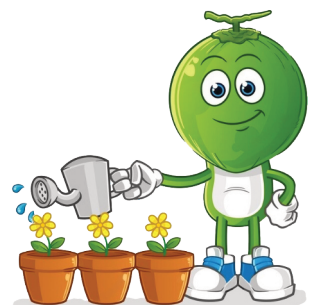
FRUITY FLY & MELON FLY LURES

The top of the fruit fly and melon fly traps are customized to fit into any plastic bottle. The wick is dosed with the respective pheromones which attract the pests into the bottle and traps them inside hence stopping reproduction therefore decreasing the numbers.



AUTO DISSEMINATION DEVICE (ADD)

It is utilized for attracting and infecting fruit flies and melon flies, enabling their dissemination for crossover infection within the population in the field and subsequently infecting others during mating.





VERTICAL GARDEN

Vertical bag farming is revolutionizing food security by significantly **increasing the yield of leafy** vegetables per square meter—up to six times more than traditional methods. This approach is not only ideal for urban and rural farmers but also for families looking to **maximize** their **gardening space**.



WHY CHOOSE VERTICAL BAG GARDENS?

- **Durable and Long-Lasting:** Can be reused for up to ten years.
- **Optimal for Nutritious Greens:** Perfect for growing leafy vegetables like amaranth, sukuma wiki, spinach, nightshade, and herbs on the sides.
- **Space and Water Efficient:** Offers ten times more space and water efficiency compared to ground planting.
- **Enhanced Productivity:** Allows for planting root crops like beetroot or onions on top, further boosting productivity.

AVAILABLE IN SIZES:

- **Large Bag:** Accommodates up to 100 plants.





HOW TO PREPARE A SEEDLING TRAY FOR PLANTING

STEP 1: START OFF WITH PREPARING A MIXTURE OF PEATMOSS & VERMICULITE



STEP 2. ADD THE READY MIXTURE OF PEATMOSS & VERMICULITE TO YOUR DURABLE TRAY



STEP 3. ENSURE YOU FILL ALL THE 150 HOLES WITH THE MIXTURE OF PEATMOSS & VERMICULITE



STEP 4. ONCE THE 150 HOLES ARE COMPLETELY FILLED, BALANCE THE MIXTURE ON THE TRAY TO BE EVENLY DISTRIBUTED. NOW YOU ARE READY TO START PLANTING IN YOUR SEEDS...



HOW TO PLANT SEEDS ON THE SEEDLING TRAY



STEPS TO TAKE

- 1- 3. **Fill Tray:** Fill each seedling tray cell with the mixture, ensuring no air pockets.
4. **Create Holes:** Make precise holes at the center of each cell, adjusting depths to 0.5 cm for small seeds and 1 cm for larger seeds.
5. **Place Seeds:** Carefully put a seed in each hole, maintaining uniform depth.
6. **Ensure Consistence:** Confirm all cells are filled and holes are of the same depth.
7. **Cover and Water:** Cover with a thin layer of medium(peat moss & vermiculite) mixture, water evenly, and avoid water-logging
8. **Uniform Germination:** use either a germination chamber or cover with a black polythene bag for 5 to 7 days until seeds start to emerge.





Become a Greene Farmer


ROYAL SEED COMPLEX

Located on Trans-view Estate,
Close to East Africa Portland Sports Club, Athi River.

 0202 690 693 | 0780 884 071

 0733 687 607

 info@khs.co.ke

 www.greeneproducts.biz

Follow Us:



[@greeneagriculturalproducts](#)